

# MACSTRAK QUARTERLY

VOLUME 17 ISSUE 1

JANUARY, FEBRUARY & MARCH 2010

## ACS – Medication at CCU Discharge as a Marker of Quality

Randomised trials and guidelines outline proven therapies in the ACS. After the immediate phase when invasive therapy is often helpful, therapeutic goals are directed to preventing a recurrent occlusion event, and preventing the progression of atherosclerosis. Macstrak provides a profile of therapy at the time of CCU discharge, and also provides a benchmark of the same markers of quality from other hospitals.

Profiles of discharge medication can consider the ACS group. Although admission diagnosis is most helpful for judging

early care, diagnosis at discharge is most appropriate for the assessment of therapy at discharge.

The first graph shows medication for the AMI STUp group (by discharge diagnosis) at CCU discharge. There is good penetrance of proven therapies.

The next graph focuses on statin therapy, and contrasts penetrance of statin therapy in the other ACS groups. AMI STUp still gets the most attention, perhaps to the relative neglect of the other groups. The third

graph shows the improvement in statin use over time, but there appears to be more work to do to achieve targets. Most patients in the AMI No STUp group should be on a statin by CCU discharge.

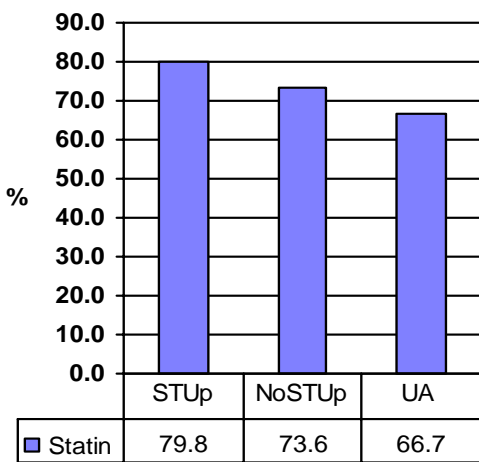
The last graph shows similar data for clopidogrel in the AMI No STUp group.

Most patients should be receiving this class of therapy by CCU discharge.

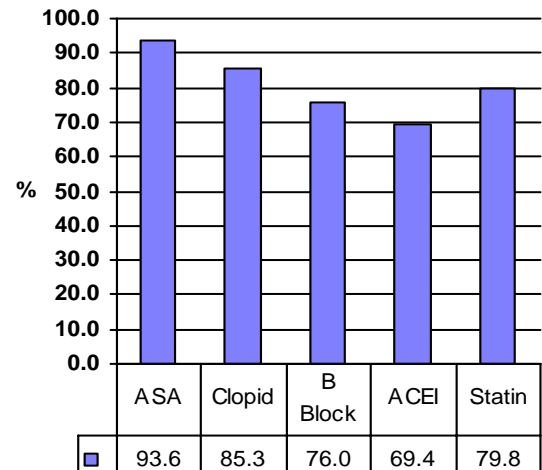
Profiles for the use of beta blockers,

and angiotensin converting enzyme inhibitors are also provided with your data disk. There are good penetrance levels but the AMI No STUp group, and Unstable Angina group both still lag behind the STUp group. Your data disk also includes benchmarking to other hospitals. How is your centre doing?

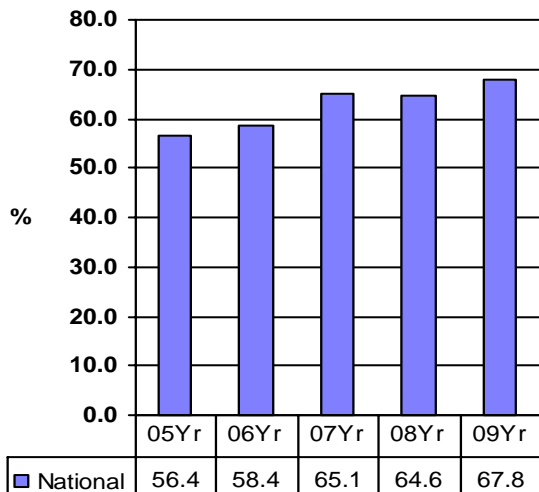
### Statin ACS Groups 2009



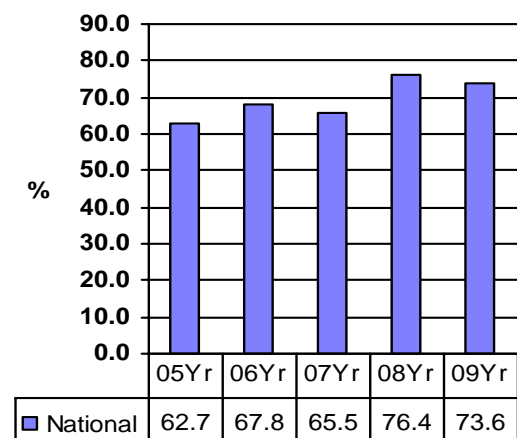
### AMI STUp National 2009



### Clopidogrel AMI No STUp Years



### Statin AMI No STUp Years



## Graphing Your Unit Data

We know a lot of you are using the electronic data and MacsFlirt to access your reports but are you remembering to look at the graphs that are sent out with the data? The four graphs on the front of this newsletter, as well as 18 other graphs illustrating the topic, are included with your data set. The graphs are available to you once the MacsFlirt data from this quarter has been uploaded.

From the MacsFlirt main menu select **Graph Groups**. When you click on the **V17I1 2009 CCU Disch Rx** link from the drop down menu, the graphs will load with your centre's data. These graphs can then be exported to PowerPoint, copied into a Word document or printed and posted with the newsletter for your staff to view.

As well, these same graph groups can be downloaded from the Macstrak website. The following address: <http://www.uhnresearch.on.ca/masctrak/resources> will take you to the Resources page of the Macstrak website. Click on the **Newsletter** link. The titles of the newsletters are hyperlinks which will display a PDF copy of the newsletter that may be printed, saved to your desktop or e-mailed. The **Graphs** link next to each newsletter title is the corresponding Graph Group for that newsletter topic. These prepared Graph Groups and corresponding newsletters can be posted or used to lead a learning seminar.

Please note that the graphs are populated with the data corresponding to the time when they were created. Older Graph Groups can be updated easily. From Graph Gallery simply select the desired Graph Group and graph and double click on it. The graph will populate on the left side of the screen. Click on the **Open Graph Tool** icon (the picture of a bar graph). You will be asked if you want to edit the selected graph. Click **Yes**. In Graph Tool you can use the drop down menu to change or add more dates.

Please feel free to contact the Project Office and we can help you use this great tool!

### THE MACSTRAK PROJECT OFFICE

University Health Network  
The Toronto General Hospital  
200 Elizabeth St., 6 E 243  
Toronto, ON  
M5G 2C4

**Tel:** (416) 595-1683 1-800-661-6123

**Fax:** (416) 595-1614 1-800-661-6107

**Email:** [macstrak@uhnres.utoronto.ca](mailto:macstrak@uhnres.utoronto.ca)

**Website:** [www.uhnres.utoronto.ca/macstrak](http://www.uhnres.utoronto.ca/macstrak)

### Important Dates

Please keep in mind the following dates for 1<sup>st</sup> quarter 2010:

**March 8<sup>th</sup>**

Supply Mailout – please let us know if you require any forms

**April 9<sup>th</sup>**

All 1<sup>st</sup> quarter forms due at project office

**April 30<sup>th</sup>**

DCF due back to close data set

PROJECT DIRECTOR  
Dr. Paul Daly

PROJECT MANAGER  
Kendra Delicaet

DATA CONSULTANT  
Rhonda Allan

SYSTEMS DEVELOPERS  
Daniel Grassick  
Quinn Peng